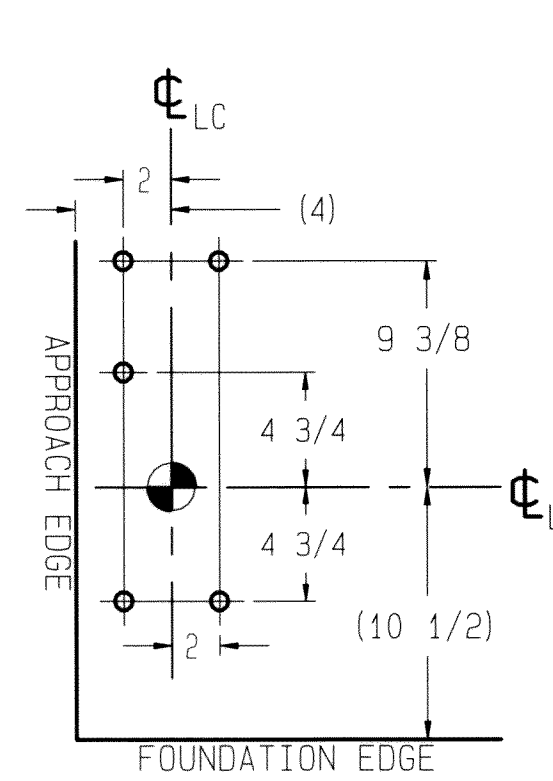
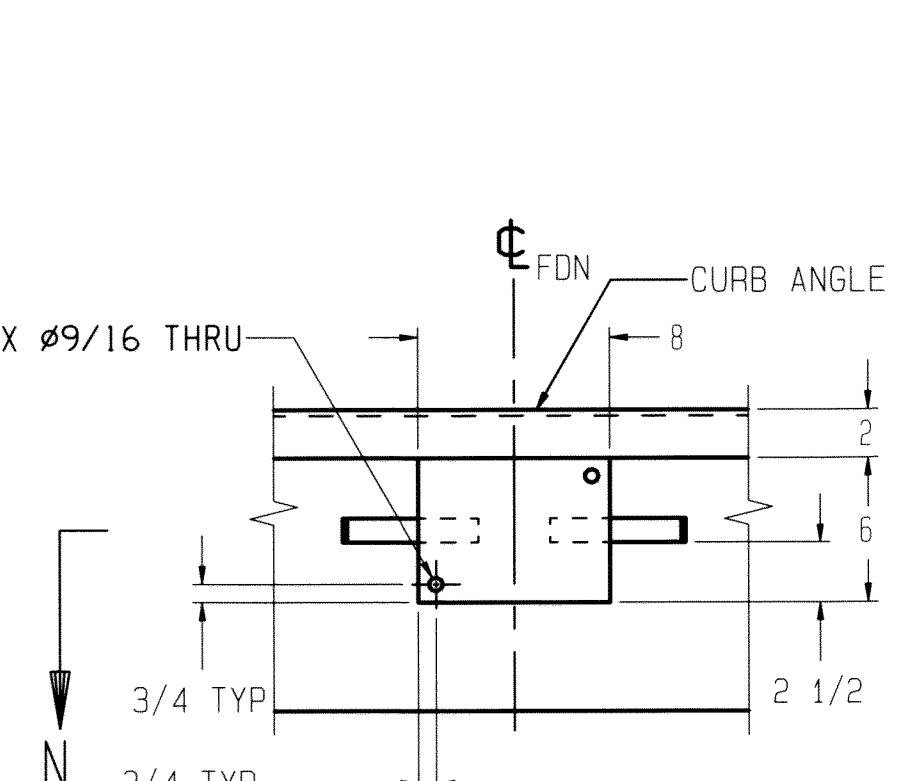


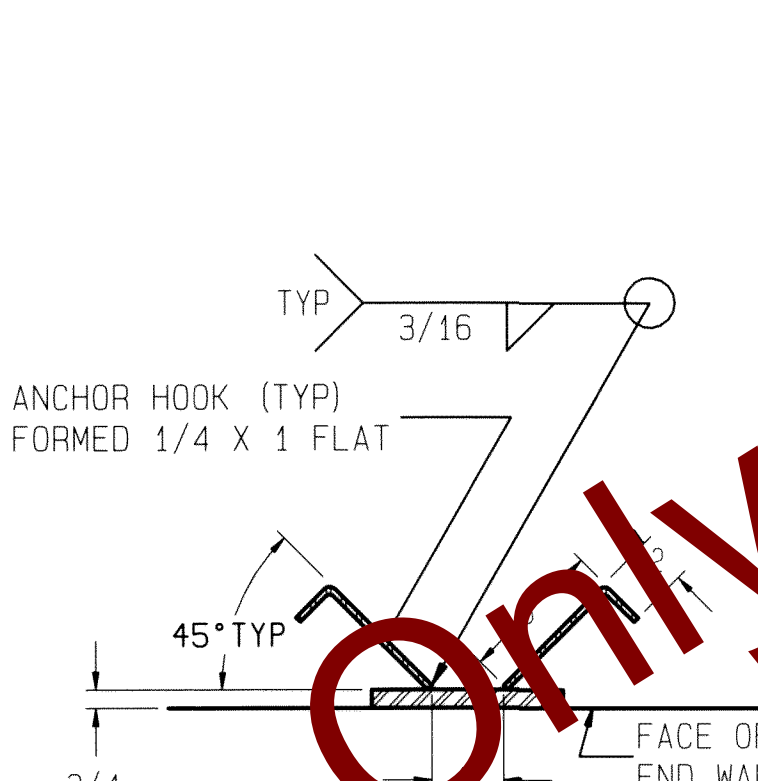
DETAIL "L"
ANCHOR LOCATIONS
(OTHER SIDE IS OPPOSITE)



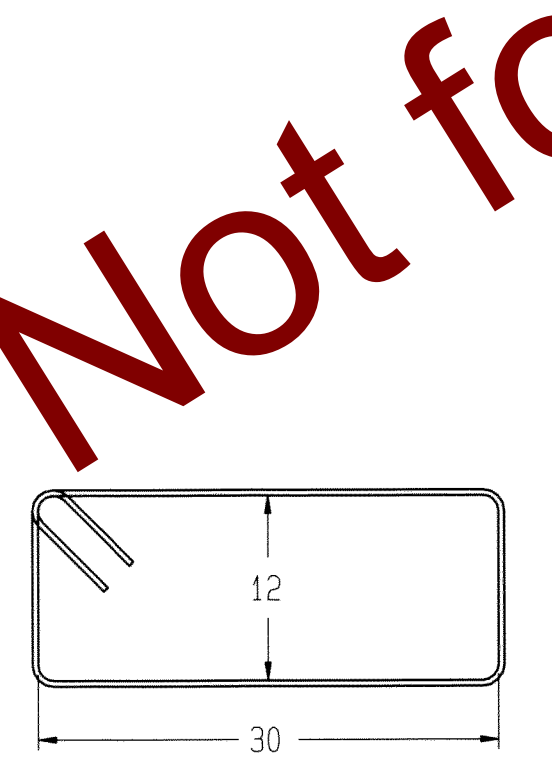
DETAIL "K"
ANCHOR LOCATIONS
(OTHER SIDE IS OPPOSITE)



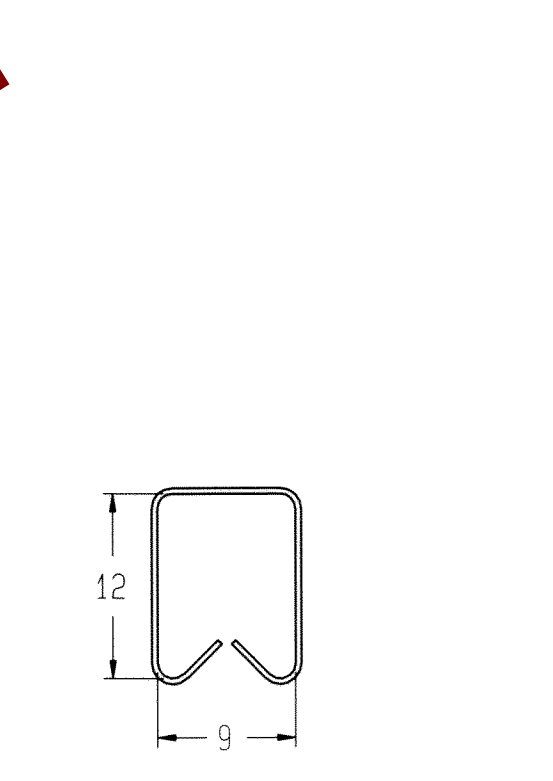
VIEW J-J
SCALE: 1/8
BUMPER PLATE ASSY'S (ONE EACH END)
MATERIAL: H.R. STEEL (BY OTHERS)



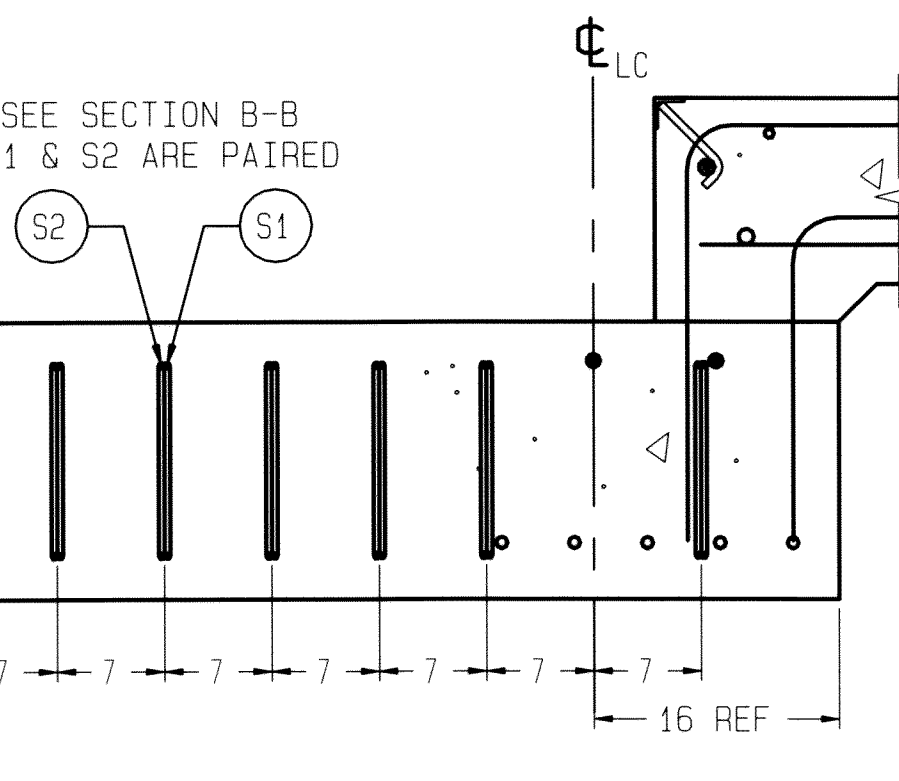
SECTION N-N
SCALE: 1/8



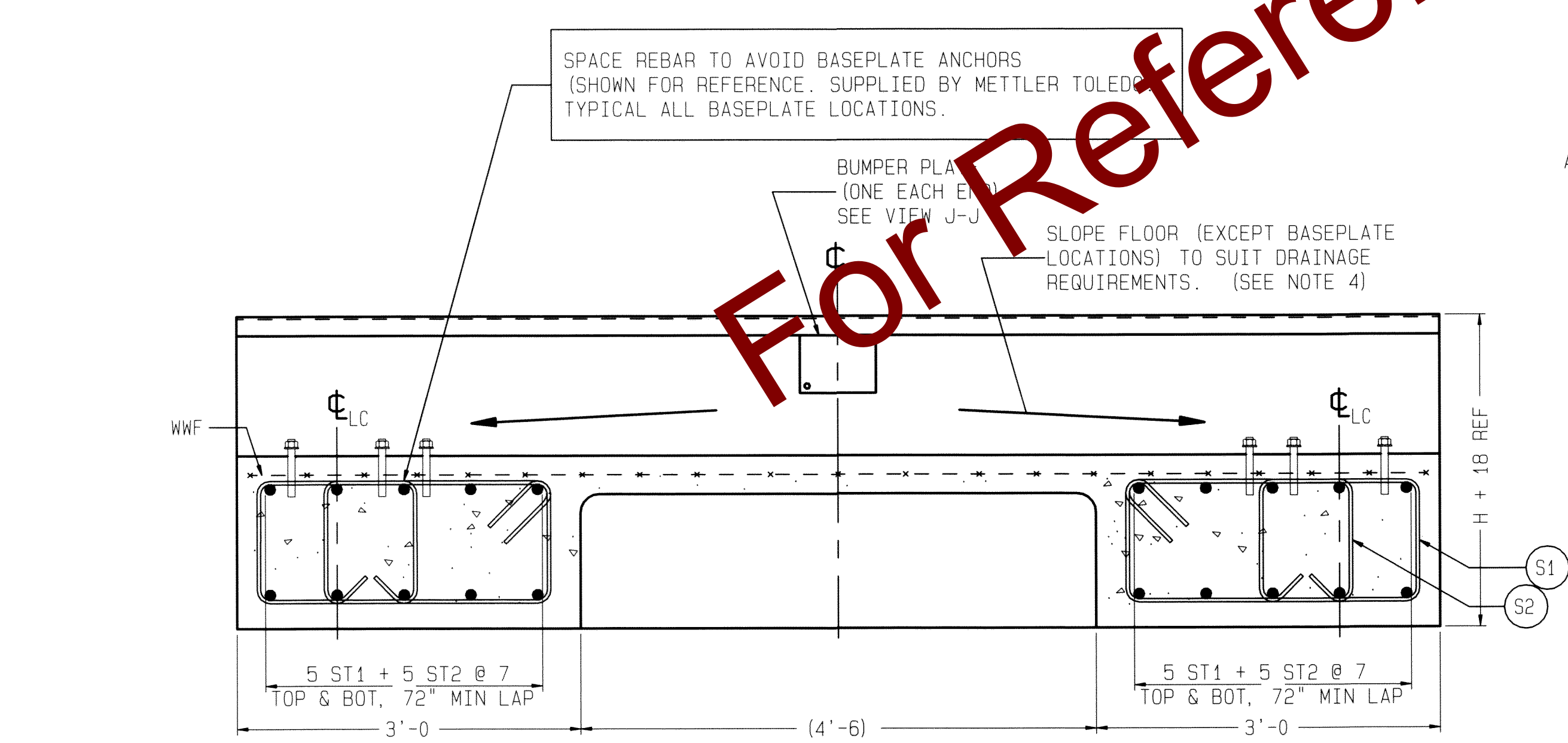
DETAIL ITEM S1
AT ANCHOR LOCATIONS
(FORM TO INSIDE DIMENSIONS)



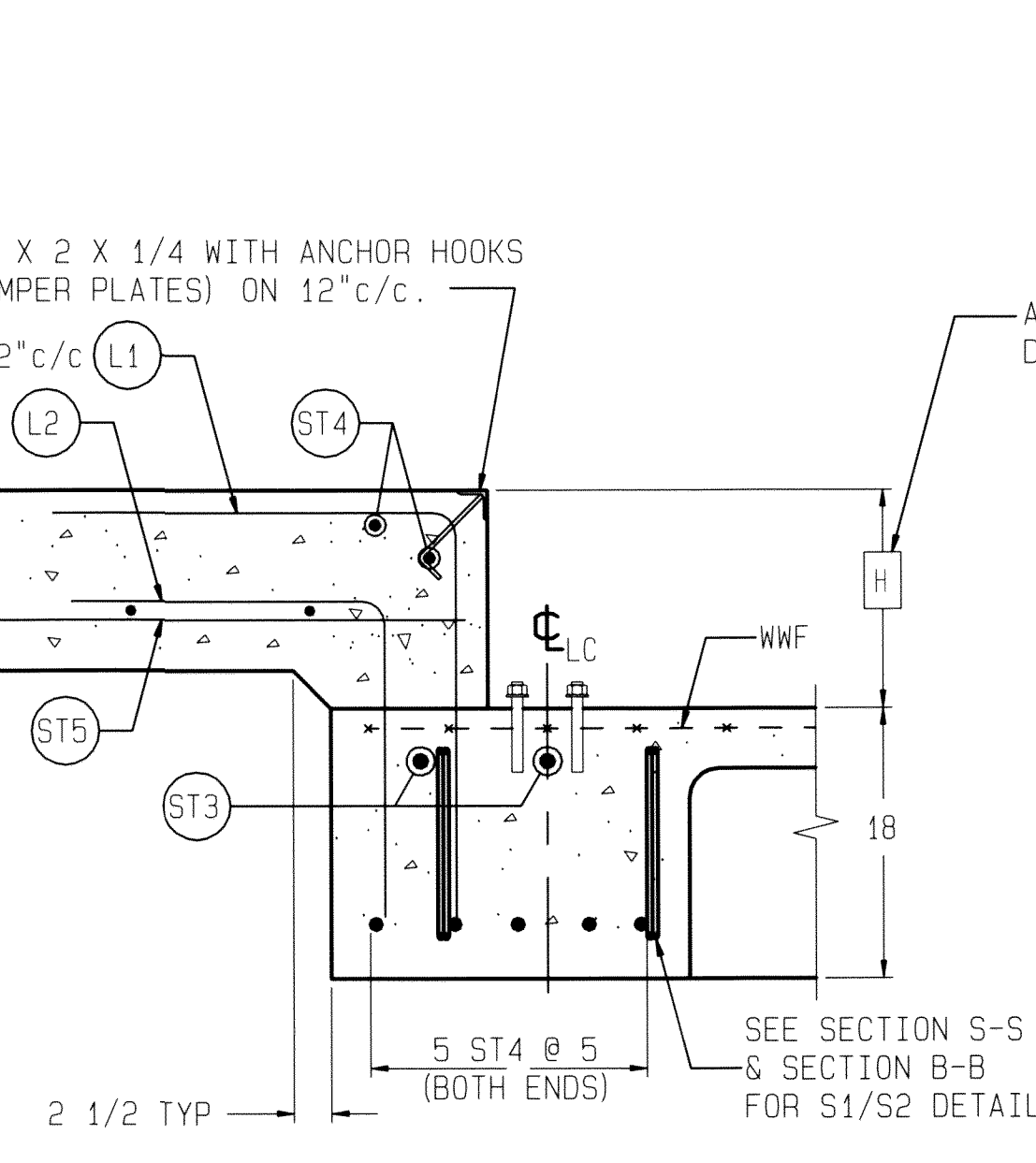
DETAIL ITEM S2
AT ANCHOR LOCATIONS
(FORM TO INSIDE DIMENSIONS)



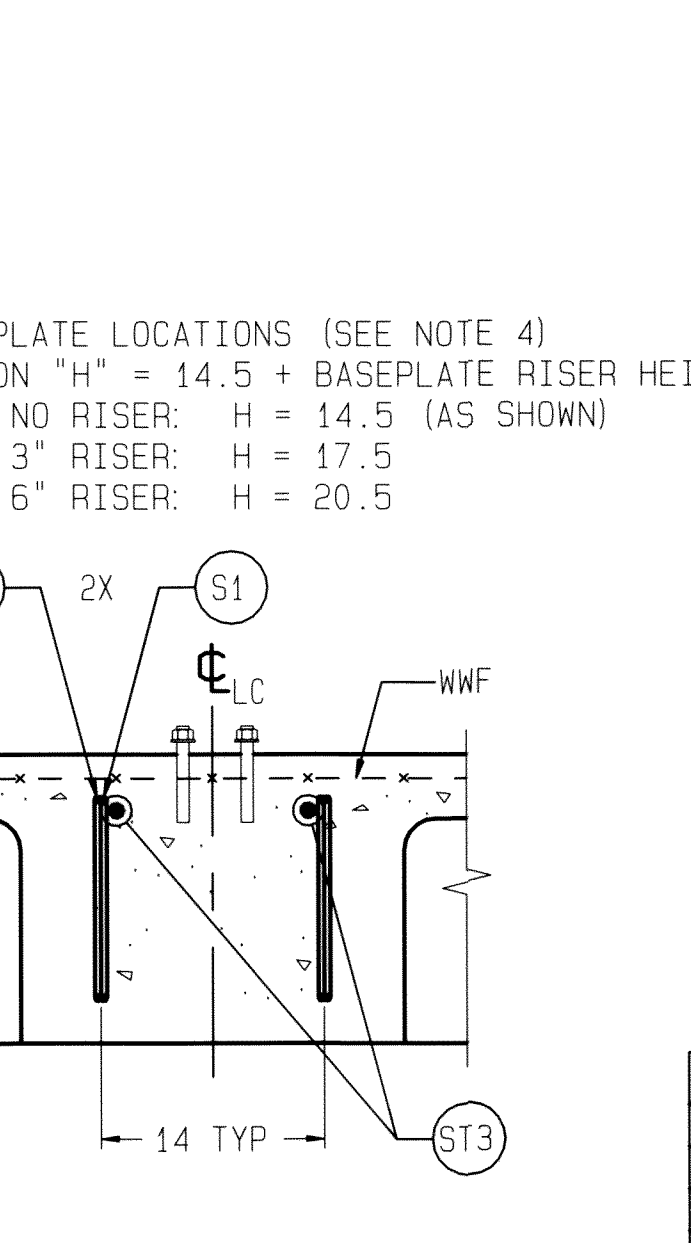
SECTION S-S
BOTH ENDS OF BOTH MAIN BEAMS
(4 PLACES TOTAL)



SECTION B-B
SCALE 1/12



SECTION C-C
SCALE 1/12
(TYPICAL END WALL)



SECTION D-D
SCALE 1/12
(TYPICAL FOOTER)
SINGLE BASEPLATE

REINFORCING STEEL SCHEDULE (A.S.T.M. A-615 GRADE 60)						
COLD FORM BARS TO INSIDE DIMENSIONS			<div><div>A</div><div>B</div></div>			
SYM	QTY	SIZE	LOCATION, DIRECTION	A	B	WGT
ST1	20	#8	FLOOR BEAMS, LONG.	40'-0		2136
ST2	20	#8	FLOOR BEAMS, LONG.	27'-10		1485
ST3	8	#7	FOOTERS, LATERAL	10'-0		164
ST4	10	#5	ENDS, LATERAL	10'-0		105
	24		APPROACHES, LATERAL			251
ST5	22	#5	APPROACHES, LONG.	9'-6		218
S1	36	#3	LARGE SHEAR LOOP	8'-0		109
S2	36	#3	SMALL SHEAR LOOP	4'-6		61
L1	22	#5	APPROACH TO END TIES	2'-4	2'-2	104
L2	22	#5	APPROACH TO END TIES	1'-10	1'-8	82

L1 & L2 GIVEN WITHOUT RISER BASEPLATES. DIMENSION "B" WILL VARY WITH THE ACTUAL HEIGHT OF RISERS USED, AS FOLLOWS:

	L1	L2
NO RISERS	2'-2"	1'-8"
3" RISERS	2'-5"	1'-11"
6" RISERS	2'-8"	2'-2"

MATERIAL SUMMARY	
CONCRETE (CU. YDS.)	35
REINFORCING STEEL (LBS)	4715
WWF: 6x6_W1.4xW1.4 (SQ. FT.)	650

- NOTES:
- USE MINIMUM 3000 PSI STRENGTH CONCRETE AT 28 DAYS WITH 5-7% AIR ENTRAINMENT.
 - USE MINIMUM 60KSI YIELD DEFORMED REINFORCING STEEL. REBAR MINIMUM DEPTH OF COVER SHOULD BE IN ACCORDANCE WITH THE LATEST ACI BUILDING CODE REQUIREMENTS FOR STRUCTURAL CONCRETE (ACI 318-SECTION 7.7). UNLESS OTHERWISE SPECIFIED.
 - FOUNDATION REQUIRES 1500 PSF RATED SOIL.
 - TOP OF CONCRETE AT BASEPLATE LOCATIONS TO BE LEVEL AND IN ONE PLANE $\pm 1/8"$.
 - DIAGONAL MEASUREMENTS ENDWALL TO ENDWALL MUST BE EQUAL WITHIN $1/2"$.
 - BASEPLATES ANCHORS TO BE SUPPLIED BY METTLER TOLEDO. USE BASEPLATES AS TEMPLATES TO LOCATE ANCHORS DURING SCALE INSTALLATION.
 - RAMP LENGTH: -PER LOCAL REGULATIONS
-1/2" SLOPE PER FOOT TYPICAL
 - CONTRACTOR SUPPLIES:
 - EXCAVATION
 - REINFORCING STEEL
 - CURB ANGLE ASSEMBLIES (SECT C-C)
 - CONCRETE AND FORMS
 - 1 1/2" DIA CONDUIT
 - BUMPER PLATE ASSEMBLIES (VIEWS J-J & N-N)

DRAWING IS TO SCALE ONLY WHEN BORDER MEASURES 22-7/8" X 35" (FULL SIZE)

REV	CHANGE	BY	DATE	SCALE	02
				DATE	10/09/09
				DRN ADF	APPD
				TITLE	VTC221 FDN, BEAM SLAB, 60' X 10' W/ RISER OPTION
				UNLESS OTHERWISE SPECIFIED, ALL DIMENSIONS ARE IN INCHES, AND DIMENSIONAL TOLERANCES ARE	THIS PRINT IS FURNISHED WITH THE UNDERSTANDING THAT THE ESSENCE THEREOF WILL NOT BE REPRODUCED IN WHOLE OR IN PART WITHOUT WRITTEN AUTHORIZATION OF METTLER TOLEDO, INC. ALL DESIGNS ARE THE PROPERTY OF METTLER TOLEDO, INC. AND WILL BE PROTECTED BY PATENTS.
				FRACTIONAL	DECIMAL
				1/32	.005
				ANGULAR	5°
					TC207836
					REV